



# THE CHOUGH



Date: Friday 4th November 2022

Dear Parents and Carers,

Hope you've had a great week despite the changing weather.



We have arranged for an additional session from our school photograph company for those that missed the original date. This will be the afternoon of Wednesday 23rd November.



We are very fortunate that our new phone system has a recording option. We would like to take this opportunity to let you know that some calls may be recorded for training and monitoring purposes.

## IMPORTANT DATES:

**Parents evenings:**  
Week beginning 28th November

**Christmas bingo:** 5th and 6th December  
3.30pm

**Years 1, 2, 3 Christmas Performance:** Monday 12th December 2pm and 5.30pm

**Years 4, 5, 6 Christmas Performance:** Tuesday 13th December 2pm and 5.30pm.

**Christmas Lunches:**  
**Wednesday 14th December for EYFS, Y1, Y2, Y3**  
**Thursday 15th for Y4, Y5, Y6**

**Last Day of Autumn term:** Thursday 15th December at 3.15pm



Notice: Treloweth Primary School distributes fliers and magazines offering family services or posts details of local activities on the newsletter. Whilst we think that parents might like the information and find it useful, the school does not necessarily endorse these services.



# THE CHOUGH



## Christmas Performances



We now have a whopping 449 children in our school – this is brilliant and somewhat challenging in equal measure!

As you can imagine, fitting everyone into the school hall is no longer an option for us. Therefore, we are splitting the Year 1, 2 and 3 performances from the Year 4, 5 and 6 performances. There will be 2 shows, one in the afternoon at 2pm and the other in the evening at 5:30pm. We need all the children for both shows to make it truly splendid.

Obviously, we have a lot of children and adults to fit into the hall and to keep everyone safe we will have to restrict the numbers to 2 tickets per household on a first come, first served basis.

We have set up a ParentPay request for tickets, which includes a voluntary contribution of 50p towards the 'Rainbow Trust' children's charity. There will be no end of show collection at the door.

The ticket request will go live 9am on Monday 7th November. You can request 1 or 2 tickets for either the afternoon or evening show. There is a maximum of 2 tickets per family. The shows will be recorded and posted on Class Dojo for anyone who is unable to make these dates.

Mrs Ishmael and Mrs Warren have arranged for the EYFS performance on 8th December at 2pm in the school hall- more information will follow on Class Dojo.

We are all looking forward to this exciting festive time and seeing you at some of these upcoming Christmas events.

Best wishes,  
Mrs May



Notice: Treloweth Primary School distributes fliers and magazines offering family services or posts details of local activities on the newsletter. Whilst we think that parents might like the information and find it useful, the school does not necessarily endorse these services.



# THE CHOUGH



## Chocolate donations

Please kindly donate any chocolate prizes for our PTA festive Bingo!

Donations can be given to your child's class teacher.

Please donate by: *Monday 28th November*



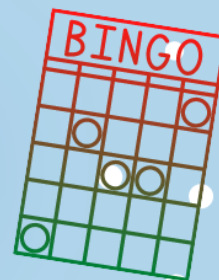
Notice: Treloweth Primary School distributes fliers and magazines offering family services or posts details of local activities on the newsletter. Whilst we think that parents might like the information and find it useful, the school does not necessarily endorse these services.



# THE CHOUGH



## Festive Bingo



Doors open at 3.30pm

£1 per book (5 games)

Children must be accompanied by an adult

EYFS, Y1, Y2 - 5th December

Y3, Y4, Y5, Y6 - 6th December

Please choose one day to attend if you have children in different year groups

Bring your  
own pen!



Notice: Treloweth Primary School distributes fliers and magazines offering family services or posts details of local activities on the newsletter. Whilst we think that parents might like the information and find it useful, the school does not necessarily endorse these services.



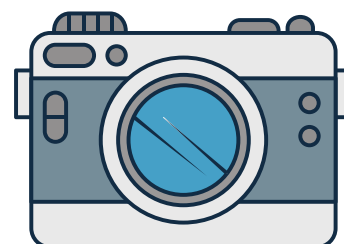
# THE CHOUGH



Height and weight checks will be held for children in Reception & Y6 at Treloweth School on Thursday 10th November. For details on how to 'opt out' please see your child class dojo page.

**Individual  
photographs mop up  
day:**

**23/11/2022**



Notice: Treloweth Primary School distributes fliers and magazines offering family services or posts details of local activities on the newsletter. Whilst we think that parents might like the information and find it useful, the school does not necessarily endorse these services.





# THE CHOUGH



## SPORTS NEWS



Treloweth made it 3 wins from 3 in the Crofty Football League, with an excellent 2-1 win over Portreath. Goals coming from Aiden & Cory.

Well Done Team

Mr Shaughnessy



Notice: Treloweth Primary School distributes fliers and magazines offering family services or posts details of local activities on the newsletter. Whilst we think that parents might like the information and find it useful, the school does not necessarily endorse these services.






# THE CHOUGH



Our Maths Whizz  
Superstar classes this  
week:

## Ave Weekly Usage (mins)

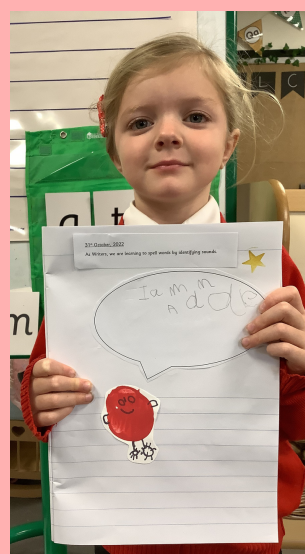
 2R - Y2	34
 3N - Y3	33
 5S - Y5	29



**Maths-Whizz®**  
by whizz EDUCATION

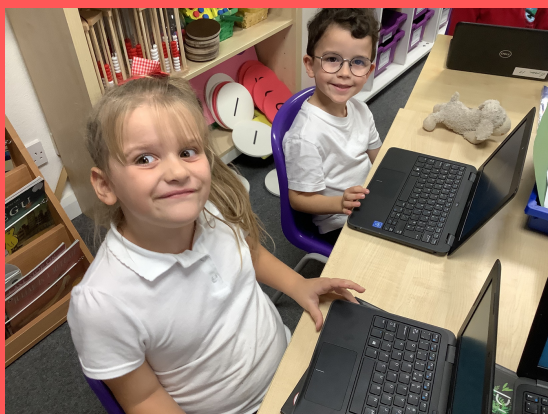
## Rainbows and Sunbeams

In Reception, we have been reading 'I am Henry Finch'. We created our own flock of fabulous finches and wrote captions to introduce our own little finches.



Notice: Treloweth Primary School distributes fliers and magazines offering family services or posts details of local activities on the newsletter. Whilst we think that parents might like the information and find it useful, the school does not necessarily endorse these services.



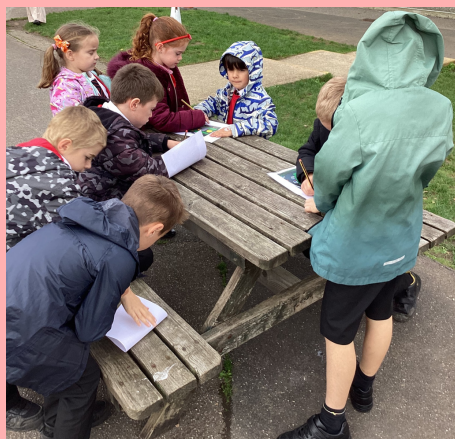


## Year 1

In Year 1, we have had lots of fun learning how to log on to the school laptops. It was great fun!

## Year 2

This week in geography we have been learning about how to use symbols and a key to read a map. We used a map of our playground to identify the place or object using the symbols. We had great fun in our learning! We then created our own symbol to add to our maps.



## Year 3

Year 3 are thoroughly enjoying their weekly ukulele lessons with Jenny. They have learnt how to play 3 cords and will soon be applying this skill to a Christmas tune.



Notice: Treloweth Primary School distributes fliers and magazines offering family services or posts details of local activities on the newsletter. Whilst we think that parents might like the information and find it useful, the school does not necessarily endorse these services.



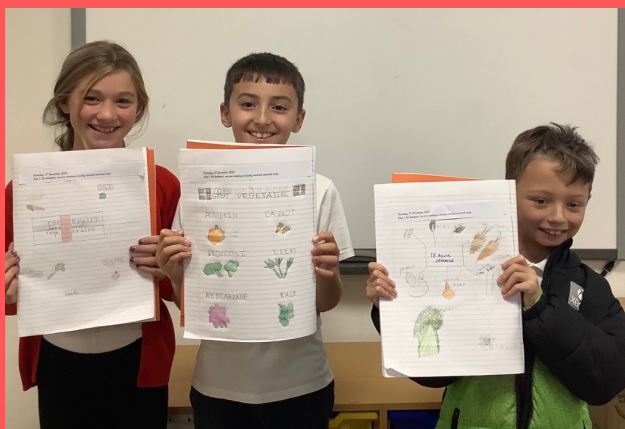
## Year 4

In Year 4, we have started a new topic in science on electricity. This week, the children have learned about different electrical appliances and considered how these have changed over time. Can you work out what this electrical appliance is from 1905?



## Year 5

Year 5 are planning a locally-sourced, seasonal vegetable soup. We've been identifying vegetables that are harvested in Cornwall in November and have made some fantastic posters. We can't wait to turnip up the heat and brussel up some tasty soup! Pars(nip) the salt and pepper.



## Year 6

Year 6 have been doing some deep thinking in RE this week. We've been learning to define the terms 'theist', 'atheist' and 'agnostic' and considering some of the reasons behind people's beliefs. The children demonstrated wonderful insight and asked many excellent philosophical questions.



Notice: Treloweth Primary School distributes fliers and magazines offering family services or posts details of local activities on the newsletter. Whilst we think that parents might like the information and find it useful, the school does not necessarily endorse these services.





## QATAR WORLD CUP ART COMPETITION

All Crofty schools are taking part in an World Cup themed art competition, where pupils may create a 'World Cup' inspired piece of art. This could include a portrait of their favourite player competing at the competition, favourite kit or stadium. Children can use any media and the art work can be any size.

All entries need to be returned to schools by:  
Friday 9th December

There will be a selection of prizes on offer to winning entries—why not create your own masterpiece during the World Cup?



Notice: Treloweth Primary School distributes fliers and magazines offering family services or posts details of local activities on the newsletter. Whilst we think that parents might like the information and find it useful, the school does not necessarily endorse these services.

# TRELOWETH SCHOOL'S NEWSLETTER

## Positive Parenting Bitesize (formerly Behaviours that Challenge) Virtual/On-line Support Group

Information Classification: CONTROLLED

**Thursday 18<sup>th</sup> August at 12:30 - 2:30 pm – Family Information Service, Volunteer Cornwall and Community Support**

Microsoft Teams meeting

**Join on your computer or mobile app**

[Click here to join the meeting](#)

**Or call in (audio only)**

+44 20 3443 6327, 145840654# United Kingdom, London

Phone Conference ID: 145 840 654#

[Find a local number](#) | [Reset PIN](#)

[Learn More](#) | [Meeting options](#)

**Thursday 22<sup>nd</sup> September at 12:30 - 2:30 pm – social media and internet safety**

Microsoft Teams meeting

**Join on your computer or mobile app**

[Click here to join the meeting](#)

**Or call in (audio only)**

+44 20 3443 6327, 399692076# United Kingdom, London

Phone Conference ID: 399 692 076#

[Find a local number](#) | [Reset PIN](#)

[Learn More](#) | [Meeting options](#)

**Friday 21<sup>st</sup> October at 12:30 - 2:30 pm – ADHD Myth busting from CAMHS access team**

Microsoft Teams meeting

**Join on your computer or mobile app**

[Click here to join the meeting](#)

**Or call in (audio only)**

+44 20 3443 6327, 615898382# United Kingdom, London

Phone Conference ID: 615 898 382#

[Find a local number](#) | [Reset PIN](#)

[Learn More](#) | [Meeting options](#)

**Monday 21<sup>st</sup> November at 12:30 - 2:30 pm – Passionate about Being Calm**

Microsoft Teams meeting

**Join on your computer or mobile app**

[Click here to join the meeting](#)

**Or call in (audio only)**

+44 20 3443 6327, 312113926# United Kingdom, London

Phone Conference ID: 312 113 926#

[Find a local number](#) | [Reset PIN](#)

[Learn More](#) | [Meeting options](#)

**Monday 12<sup>th</sup> December at 10-12.00pm - Autism with Matt Wilmott Autism Advisor**

Microsoft Teams meeting

**Join on your computer or mobile app**

[Click here to join the meeting](#)

**Or call in (audio only)**

+44 20 3443 6327, 717314886# United Kingdom, London

Phone Conference ID: 717 314 886#

[Find a local number](#) | [Reset PIN](#)

[Learn More](#) | [Meeting options](#)

**PLEASE NOTE – you may need to install the free app if using an Apple device or phone**

**For further information please contact**

Julie Attwell Email:

[julie.attwell@cornwall.gov.uk](mailto:julie.attwell@cornwall.gov.uk)



Together for Families



[www.cornwall.gov.uk](http://www.cornwall.gov.uk)



Notice: Treloweth Primary School distributes fliers and magazines offering family services or posts details of local activities on the newsletter. Whilst we think that parents might like the information and find it useful, the school does not necessarily endorse these services.