



THE CHOUGH

Date: Friday 17th March 2023



Dear Parents and Carers

We had some very sad news this week where a young member of our local community died in a tragic accident. We send our heartfelt thoughts and sincerest condolences to the young person's family and friends. If anyone in our school has been affected, please get in touch so that we can support you or your child at this very difficult time. You can also call Penhaligon's Friends, a charity who support bereaved children and families; you can contact the charity directly on 01209 215889.

IMPORTANT DATES:

Last day of term - Friday 31st March 3.15pm finish.

Final week of clubs - week beginning 27th of March

Easter Bingo (EYFS,Y1,Y2) 27th March (Y3, Y4, Y5, Y6) 28th March



Notice: Treloweth Primary School distributes fliers and magazines offering family services or posts details of local activities on the newsletter. Whilst we think that parents might like the information and find it useful, the school does not necessarily endorse these services.

THE CHOUGH



As mentioned last week, here is a brief guide to the school uniform. When it's warm enough, smart black tailored shorts can also be an option. We pair these items below with black or white socks and black shoes.



I know that wearing PE kit to school is loved by the children and from the feedback received, parents and teachers find it easier too. However, we have had a rainbow of assorted colours coming in. Black shorts, black leggings or black joggers with a white plain T-shirt is the correct PE uniform with the school sweatshirt over the top for chilly days.

To keep costs down, we don't insist on the red cardigan or red sweatshirt having the school logo on.





THE CHOUGH



Hip, hip hooray - It's our birthday!

Treloweth's 50th Birthday 30th March 2023



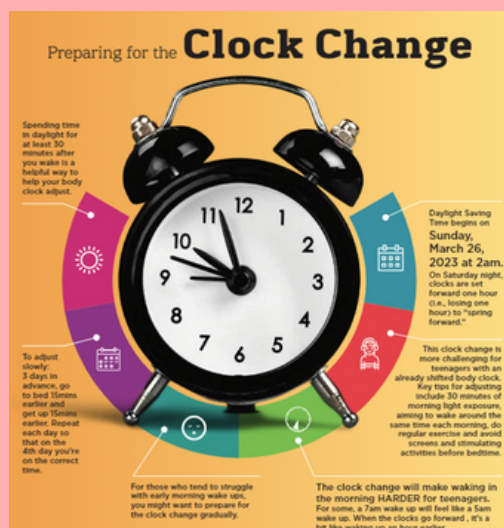
The first part of the school was originally built and opened to children on 30th March 1973 by the then Secretary of State for Education, Margaret Thatcher. At that time, the school was much smaller than it is now! In subsequent years the school has expanded to allow for more children as the housing around us also grew. We have a few more weeks before the big day but will have a celebratory assembly with the children and staff followed by a treat of birthday cake to mark the day.

Don't forget Easter Bingo is just around the corner - Monday 27th and Tuesday 28th March - 3:30pm for 'eyes down!' Donations gratefully received.

Have a good weekend.

Best wishes, Mrs May

The clocks go forward at 2am on 26th March - here's a little helpful guide.



EASTER

Bingo

£1 per book (5 games)

All children accompanied by an adult
Please choose one day to attend if you have children in different year groups.

EYFS, Year 1 & Year 2 - 27th March

Year 3, Year 4, Year 5 & Year 6 - 28th March



Notice: Treloweth Primary School distributes fliers and magazines offering family services or posts details of local activities on the newsletter. Whilst we think that parents might like the information and find it useful, the school does not necessarily endorse these services.

Easter Egg donations

Please donate chocolate Easter eggs and treats for the Easter Bingo. They can be given to your class teacher.

LAST DAY FOR DONATIONS: MONDAY 20TH MARCH



Notice: Treloweth Primary School distributes fliers and magazines offering family services or posts details of local activities on the newsletter. Whilst we think that parents might like the information and find it useful, the school does not necessarily endorse these services.

2023/2024 Term dates

Treloweth School

2023/2024 School Term Dates

September 2023

Mon

Tue

Wed

Thurs

Fri

Sat

Sun

6

7

1

2

3

11

12

13

14

15

16

10

18

19

20

21

22

23

24

25

26

27

28

29

30

October 2023

Mon

Tue

Wed

Thurs

Fri

Sat

Sun

2

9

16

23

30

31

3

10

17

24

21

14

7

4

11

18

25

12

19

6

5

12

13

20

27

24

17

1

8

15

22

29

26

19

November 2023

Mon

Tue

Wed

Thurs

Fri

Sat

Sun

6

13

20

27

7

14

21

28

25

18

11

8

15

22

29

26

19

12

9

16

23

30

27

20

13

10

17

24

21

14

7

11

18

25

22

15

8

1

12

19

26

23

16

9

2

December 2023

Mon

Tue

Wed

Thurs

Fri

Sat

Sun

4

11

18

25

5

12

19

26

6

13

20

27

7

14

21

28

1

8

15

22

29

2

9

16

23

30

3

10

17

24

31

January 2024

Mon

Tue

Wed

Thurs

Fri

Sat

Sun

1

8

15

22

29

2

9

16

23

30

3

10

17

24

31

4

11

18

25

5

12

19

26

6

13

20

27

7

14

21

28

February 2024

Mon

Tue

Wed

Thurs

Fri

Sat

Sun

5

12

19

26

6

13

20

27

7

14

21

28

1

8

15

22

29

2

9

16

23

3

10

17

24

4

11

18

25

March 2024

Mon

Tue

Wed

Thurs

Fri

Sat

Sun

4

11

18

25

5

12

19

26

6

13

20

27

7

14

21

28

1

8

15

22

29

2

9

16

23

30

3

10

17

24

31

April 2024

Mon

Tue

Wed

Thurs

Fri

Sat

Sun

1

8

15

22

29

2

9

16

23

30

3

10

17

24

4

11

18

25

5

12

19

26

6

13

20

27

7

14

21

28

May 2024

Mon

Tue

Wed

Thurs

Fri

Sat

Sun

6

13

20

27

7

14

21

28

8

15

22

29

1

9

16

23

30

2

10

17

24

31

3

11

18

25

4

12

19

26

June 2024

Mon

Tue

Wed

Thurs

Fri

Sat

Sun

3

10

17

24

4

11

18

25

5

12

19

26

6

13

20

27

7

14

21

28

1

8

15

22

29

2

9

16

23

30

July 2024

Mon

Tue

Wed

Thurs

Fri

Sat

Sun

1

8

15

22

29

2

9

16

23

30

3

10

17

24

31

4

11

18

25

5

12

19

26

6

13

20

27

7

14

21

28

August 2024

Mon

Tue

Wed

Thurs

Fri

Sat

Sun

5

12

19

26

6

13

20

27

7

14

21

28

1

8

15

22

29

2

9

16

23

30

3

10

17

24

31

4

11

18

25

School holidays

Bank holidays

Christmas Day	25 December 2023
Boxing Day	26 December 2023
New Years Day	01 January 2024
Good Friday	29 March 2024
Easter Monday	01 April 2024
May Bank Holiday	06 May 2024
Spring Bank Holiday	27 May 2024
Summer Bank Holiday	26 August 2024

AUTUMN TERM (72 days)

4 September - 19 December 2023
(HALF TERM 23-27 October 2023)

SPRING TERM (56 days)

3 January - 28 March 2024
(HALF TERM 12-16 February 2024)

SUMMER TERM (67 days)

15 April - 24 July 2024
(HALF TERM 27-31 May 2024)

6 Non pupil days

Rainbows and Sunbeams

The children have enjoyed learning about length and height and have been exploring this independently through a range of activities. Our Sunflowers are slowly starting to grow, so next week we will compare who's in the lead so far!



Notice: Treloweth Primary School distributes fliers and magazines offering family services or posts details of local activities on the newsletter. Whilst we think that parents might like the information and find it useful, the school does not necessarily endorse these services.



Year 1



In Science, Year 1 have been testing objects to see if they are rigid or bendy.

Year 2

In Year 2, we've been investigating how puppets are made! We're excited to design and make our own.



Year 3

In Art, we have enjoyed applying colour with different brushes while learning about different brush strokes. We used different brushes to create 'one stroke, zig - zag, stabbing, tapping, overlapping and curl.' The children were very happy with the outcomes.



Year 4

In Year 4, we have continued to develop our understanding of coding. The children have been able to create a range of different codes and sequences which have allowed them to control a helicopter on their screens.



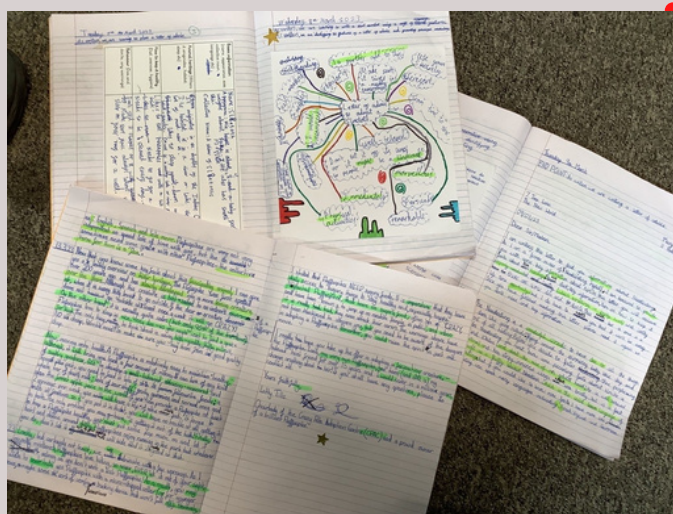
Year 5

For Science Week, Year 5 teamed up with Year 1 to make planes, gliders and helicopters! They carried out test flights and worked together to make improvements to their designs.



Year 6

This week, Year 6 have finished and polished their final written piece, inspired by Shaun Tan's illustrated masterpiece: The Arrival. We imagined our own fantastical, strange creatures and devised ways to care for them. We then wrote letters of advice to give their potential owners tips and maintenance information.



Notice: Treloweth Primary School distributes fliers and magazines offering family services or posts details of local activities on the newsletter. Whilst we think that parents might like the information and find it useful, the school does not necessarily endorse these services.



Supporting Children After A Traumatic Event

1.Safe

Be open and honest
Encourage and answer questions
Be consistent and reliable
Reinforce who is there for them

Following a traumatic event, children need to feel...

2.Calm

Validate feelings
Encourage emotional expression
Offer comforting items
Suggest movement or breathing exercises

5.Hopeful

Recognise the severity of what's happened
Validate their response
Remind them things will feel more manageable in time

3.Connected

Encourage return to school
Spend quality time together
Enable time to be with friends

4.In Control

Involve them in decisions
Provide choices within familiar boundaries
Remind them they're capable and supported

This support is most helpful when given by people the child knows and trusts.



Penhaligon's Friends 2023



Notice: Treloweth Primary School distributes fliers and magazines offering family services or posts details of local activities on the newsletter. Whilst we think that parents might like the information and find it useful, the school does not necessarily endorse these services.